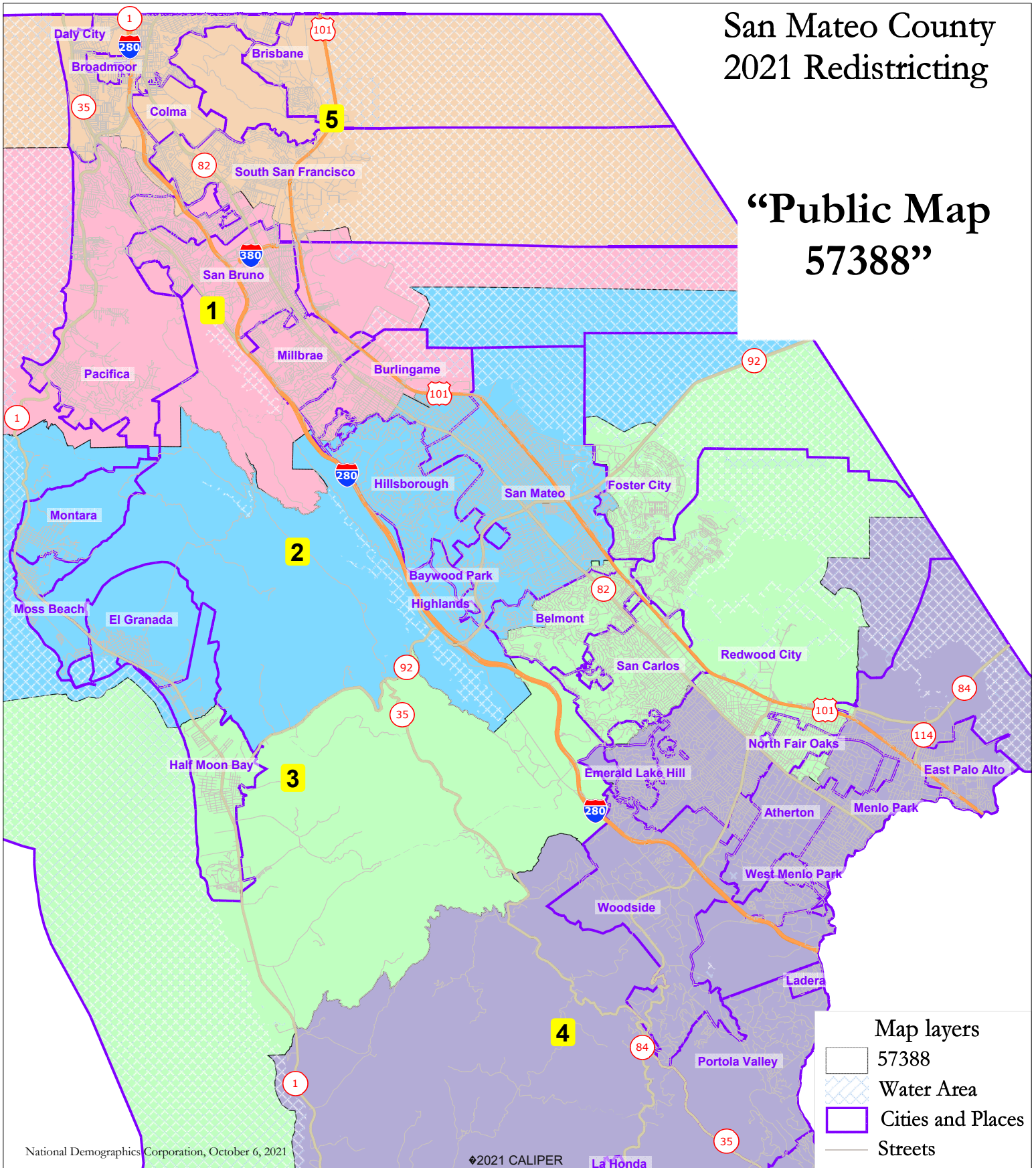


San Mateo County 2021 Redistricting

“Public Map 57388”



San Mateo County Public 57388

District		1	2	3	4	5	Total
	Total Pop	155,440	152,510	157,110	148,446	151,911	765,417
	Deviation from ideal	2,357	-573	4,027	-4,637	-1,172	8,664
	% Deviation	1.54%	-0.37%	2.63%	-3.03%	-0.77%	5.66%
Total Pop	% Hisp	19.2%	21%	25%	31%	29%	25%
	% NH White	33%	44%	41%	47%	15%	36%
	% NH Black	2%	2%	2%	4%	2%	2%
	% Asian-American	41%	28%	29%	13%	50%	32%
Citizen Voting Age Pop	Total	109,839	98,734	93,614	93,858	104,802	500,848
	% Hisp	16%	14%	17%	17%	24%	18%
	% NH White	42%	57%	57%	64%	20%	47%
	% NH Black	2%	2%	2%	5%	3%	3%
	% Asian/Pac.Isl.	39%	25%	23%	12%	52%	31%
Voter Registration (Nov 2020)	Total	96,967	92,421	88,051	88,508	79,939	445,886
	% Latino est.	20%	13%	15%	16%	33%	19%
	% Spanish-Surnamed	18%	12%	14%	15%	31%	18%
	% Asian-Surnamed	17%	15%	16%	7%	17%	14%
	% Filipino-Surnamed	6%	2%	2%	1%	11%	4%
	% NH White est.	55%	68%	65%	70%	35%	59%
	% NH Black	3%	2%	2%	6%	5%	4%
Voter Turnout (Nov 2020)	Total	82,223	80,044	76,474	75,253	63,882	377,876
	% Latino est.	19%	12%	14%	15%	33%	18%
	% Spanish-Surnamed	18%	11%	13%	14%	30%	17%
	% Asian-Surnamed	17%	15%	16%	7%	17%	14%
	% Filipino-Surnamed	5%	2%	2%	1%	11%	4%
	% NH White est.	56%	69%	67%	72%	36%	61%
	% NH Black	3%	2%	2%	5%	5%	3%
Voter Turnout (Nov 2018)	Total	59,614	61,576	58,635	59,124	40,956	279,905
	% Latino est.	17%	10%	12%	12%	32%	16%
	% Spanish-Surnamed	16%	10%	11%	11%	30%	15%
	% Asian-Surnamed	14%	12%	13%	6%	15%	12%
	% Filipino-Surnamed	5%	1%	1%	1%	9%	3%
	% NH White est.	61%	73%	71%	76%	40%	66%
	% NH Black est.	3%	2%	2%	4%	5%	3%
ACS Pop. Est.	Total	153,913	153,048	153,353	153,172	153,904	767,391
Age	age0-19	21%	23%	24%	26%	19%	23%
	age20-60	56%	54%	55%	54%	58%	55%
	age60plus	24%	23%	20%	20%	23%	22%
Immigration	immigrants	35%	31%	35%	27%	47%	35%
	naturalized	71%	52%	49%	42%	67%	58%
Language spoken at home	english	56%	61%	55%	61%	38%	54%
	spanish	12%	15%	19%	25%	21%	18%
	asian-lang	25%	15%	14%	6%	37%	19%
	other lang	8%	8%	11%	8%	5%	8%
Language Fluency	Speaks Eng. "Less than Very Well"	16%	15%	15%	13%	27%	17%
Education (among those age 25+)	hs-grad	36%	27%	26%	27%	41%	32%
	bachelor	30%	32%	29%	25%	28%	29%
	graduatedegree	17%	27%	29%	30%	8%	22%
Child in Household	child-under18	31%	31%	34%	36%	30%	33%
Pct of Pop. Age 16+	employed	68%	69%	70%	68%	69%	69%
Household Income	income 0-25k	9%	8%	9%	9%	10%	9%
	income 25-50k	11%	10%	10%	11%	13%	11%
	income 50-75k	11%	10%	9%	11%	14%	11%
	income 75-200k	46%	40%	38%	34%	47%	41%
	income 200k-plus	24%	32%	34%	35%	15%	29%
Housing Stats	single family	70%	61%	63%	72%	65%	66%
	multi-family	30%	39%	37%	28%	35%	34%
	rented	35%	41%	41%	40%	42%	40%
	owned	65%	59%	59%	60%	58%	60%

Total population data from the 2020 Decennial Census.

Surname-based Voter Registration and Turnout data from the California Statewide Database.

Latino voter registration and turnout data are Spanish-surname counts adjusted using Census Population Department undercount estimates. NH White and NH Black registration and turnout counts estimated by NDC. Citizen Voting Age Pop., Age, Immigration, and other demographics from the 2015-2019 American Community Survey and Special Tabulation 5-year data.