

# San Mateo County District Lines Advisory Commission

## Introduction to Redistricting

Kristen Parks, National Demographics Corp.

# Current District Map



# Census Delays Impacted Redistricting Schedule

Description	Planned Schedule	Actual Schedule
Completion of Census 2020	July 31, 2020	October 15, 2020
Census to release official population data	March 31, 2021	August 12, 2021
California to release official redistricting data	April/May 2021	September 2021
<b>Legal deadline for map adoption</b>	<b>December 15, 2021</b>	<b>December 15, 2021</b>
First election with new map	June 7, 2022	June 7, 2022

# Redistricting Timeline

Date	Event(s)
August 12, 2021	Census Bureau releases official 2020 data
<b>August 25, 2021</b>	Initial Meeting of District Lines Advisory Commission
September 2021	California releases official redistricting data
<b>September 8, 2021</b>	Workshop to demo mapping tools and solicit public input on “communities of interest”
September 2021	Public submits maps
October 2021	Commission reviews and recommends map(s)
November 2021	✓ Public hearings to discuss map(s) ✓ Board adopts final map
December 15, 2021	Statutory deadline to adopt new map

# Legal Criteria for Redistricting

## 1. Federal Law

- ✓ Ensure equal population
- ✓ Comply with federal Voting Rights Act
- ✓ Prevent racial gerrymandering

## 2. California Law

1. Ensure geographic **contiguity**
2. Minimize division of neighborhoods & **“communities of interest”**
3. Minimize division of **cities & CDPs**
4. Create easily identifiable boundaries
5. Maintain **compactness**

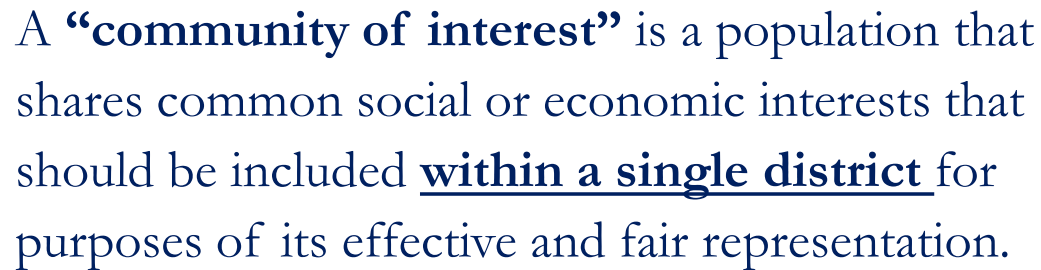
## 3. Other Goals

- Minimize changes to election cycles
- Respect voters’ choices
- Preserve core of existing districts
- Anticipate future growth

- ✓ Do not “favor or discriminate against a political party”

# Beyond Neighborhoods: Defining “Communities of Interest”

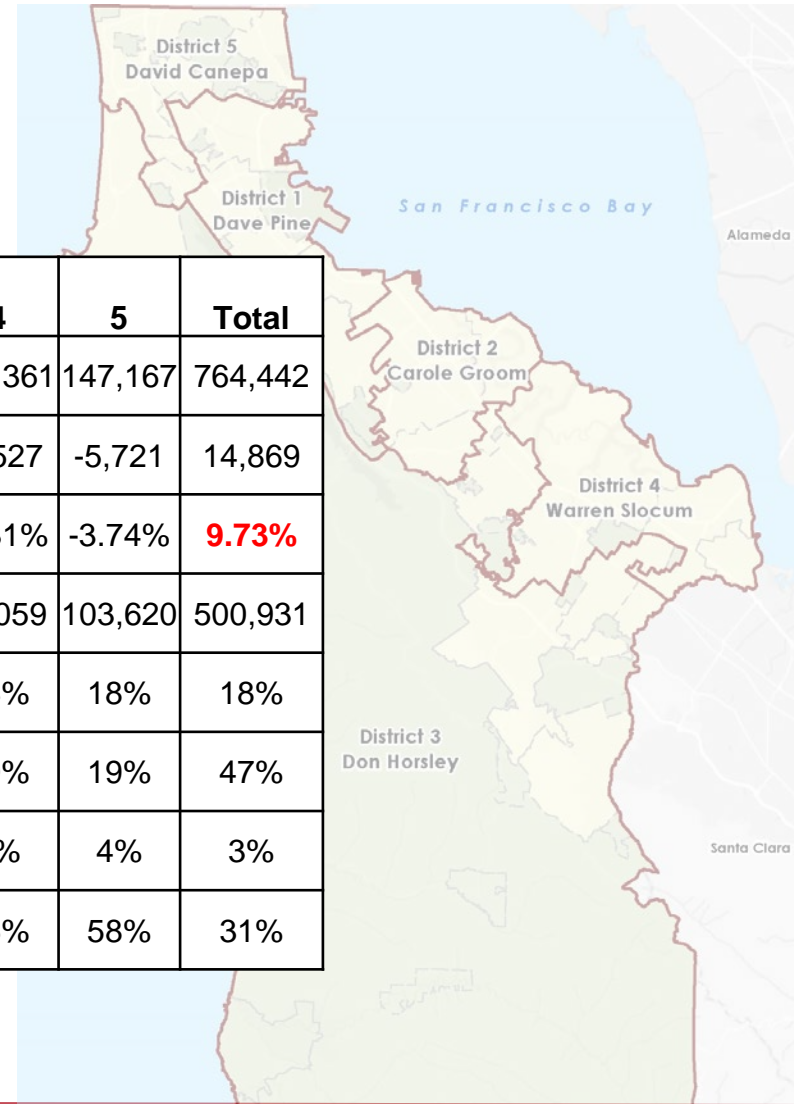
Under California Elections Code, “community of interest” has a very specific definition in the context of redistricting:



A “community of interest” is a population that shares common social or economic interests that should be included within a single district for purposes of its effective and fair representation.

Definitions of “communities of interest” do **not** include relationships with political parties, incumbents, or political candidates.

# *Non-Adjusted* 2020 Population Data



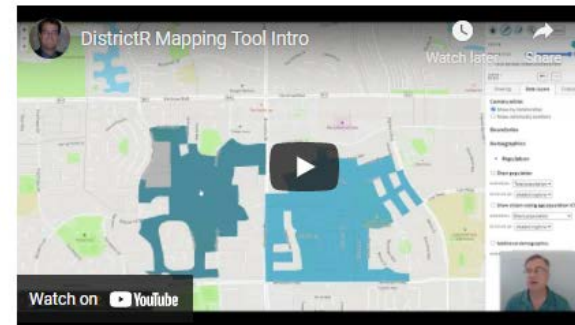
District		1	2	3	4	5	Total
2020	2020 Census (Raw)	151,363	162,036	154,515	149,361	147,167	764,442
	Deviation from ideal	-1,525	9,148	1,627	-3,527	-5,721	14,869
	% Deviation	-1.00%	5.98%	1.06%	-2.31%	-3.74%	<b>9.73%</b>
Citizen Voting Age Pop	Total	102,424	99,044	111,784	84,059	103,620	500,931
	% Hisp	21%	14%	11%	28%	18%	18%
	% NH White	43%	52%	72%	49%	19%	47%
	% NH Black	2%	3%	2%	7%	4%	3%
	% Asian/Pac.Isl.	34%	30%	15%	16%	58%	31%

# Public Mapping Tools

- NDC provides a paper-only participation kit and online mapping tools
- Online tools are available at [smcdistrictlines.org/](http://smcdistrictlines.org/)

## DistrictR Online Mapping Tool

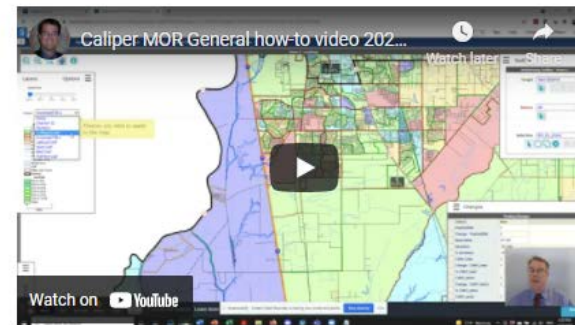
DistrictR is a simple online "paint brush" tool that allows you to "paint" your neighborhood, your comm account or login is required to access the tool.



DistrictR Instructional Video

## Maptitude Online Mapping Tool

Maptitude is an advanced online tool that allows you to draw districts Census Block by Census Block, demographic consultants. You can fine-tune your district lines and see the resulting demographics in you must create a user account.

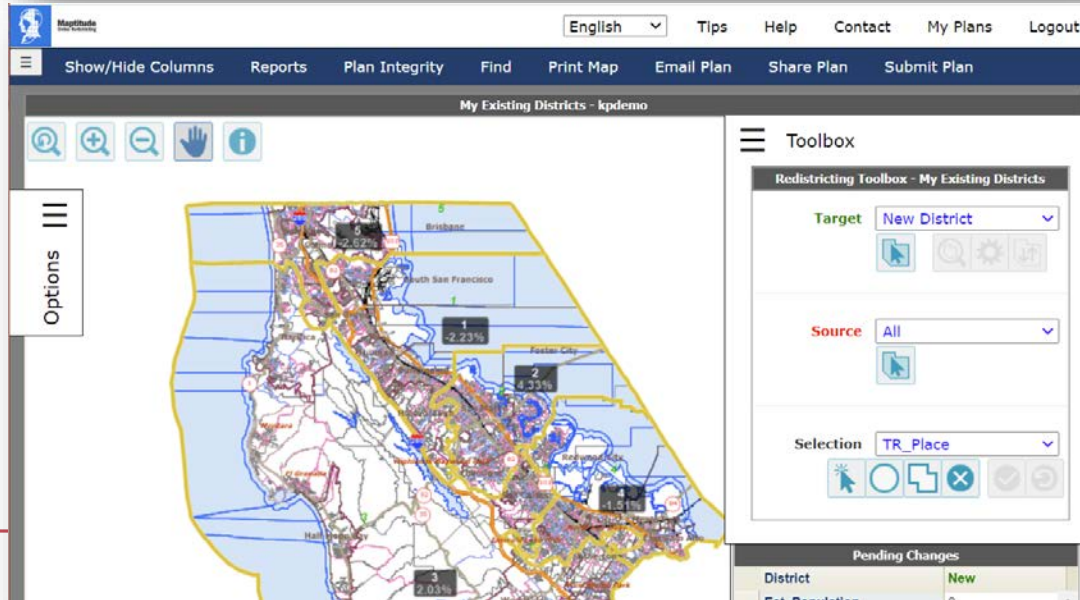
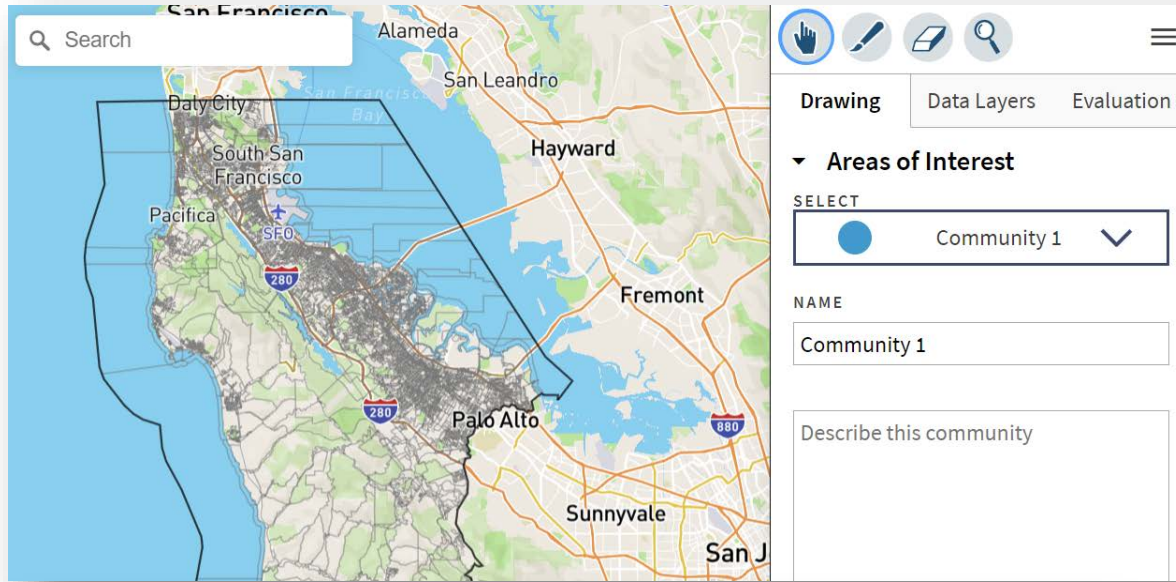


Maptitude Instructional Video



# Online Mapping Tools

DistrictR



Mapitude

# Next Steps

- Finalize schedule of workshops & public hearings
- County conducts outreach to promote public participation
- Visit [smcdistrictlines.org/](https://smcdistrictlines.org/) to learn more about the redistricting process