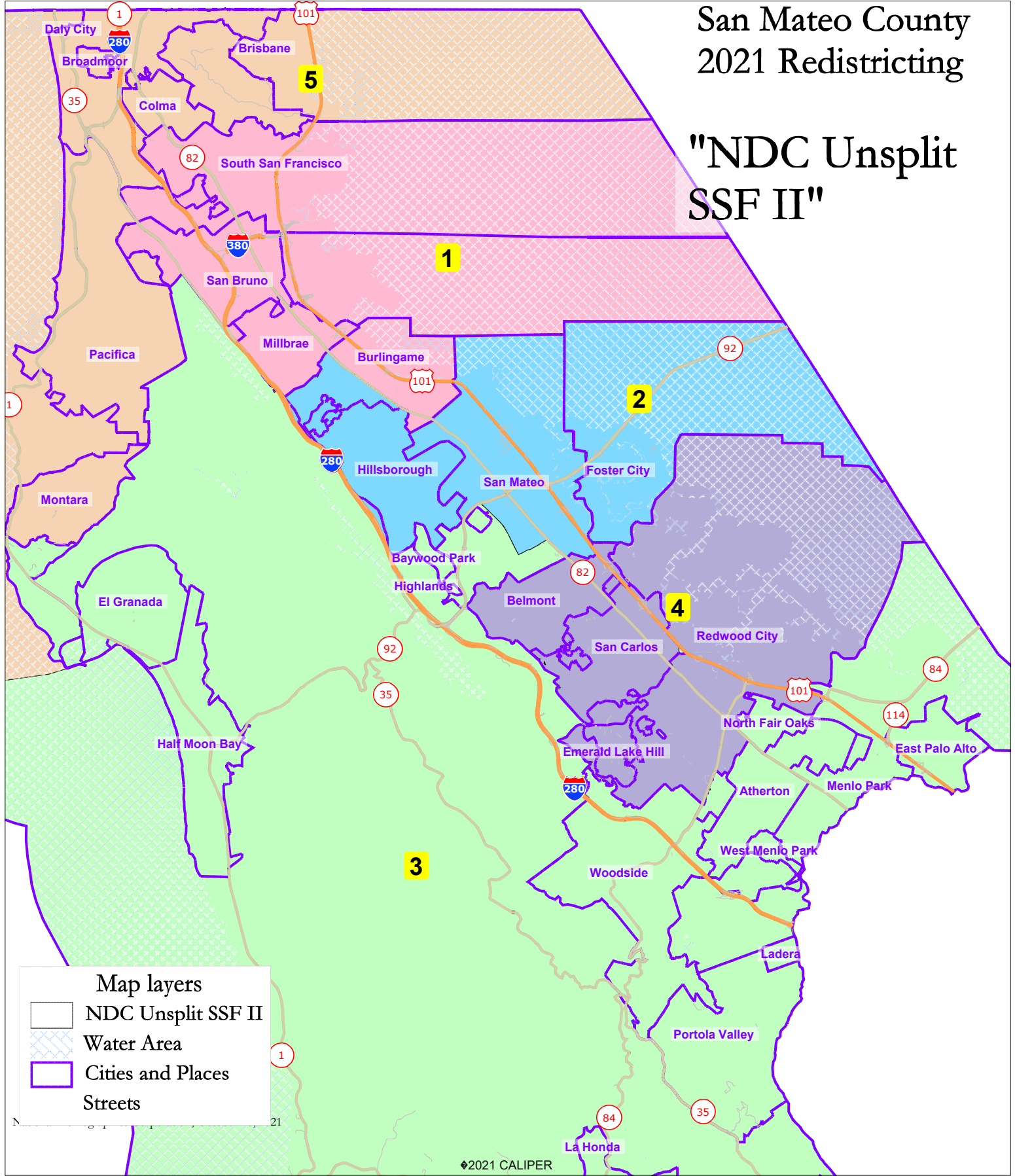


# San Mateo County 2021 Redistricting

## "NDC Unsplit SSF II"



NDC Unsplit SSF II							
District		1	2	3	4	5	Total
	Total Pop	151,493	151,192	153,109	159,329	150,294	765,417
	Deviation from ideal	-1,590	-1,891	26	6,246	-2,789	9,035
	% Deviation	-1.04%	-1.24%	0.02%	4.08%	-1.82%	5.90%
Total Pop	% Hisp	26.2%	19%	32%	25%	22%	25%
	% NH White	27%	38%	45%	48%	21%	36%
	% NH Black	2%	2%	4%	2%	2%	2%
	% Asian-American	40%	36%	15%	21%	50%	32%
Citizen Voting Age Pop	Total	104,222	91,655	96,144	102,069	106,759	500,848
	% Hisp	22%	14%	17%	17%	18%	18%
	% NH White	35%	51%	62%	64%	26%	47%
	% NH Black	2%	3%	5%	2%	4%	3%
	% Asian/Pac.Isl.	39%	31%	14%	17%	51%	31%
Voter Registration (Nov 2020)	Total	88,136	86,468	91,358	95,004	84,920	445,886
	% Latino est.	25%	13%	17%	15%	27%	19%
	% Spanish-Surnamed	23%	12%	15%	14%	25%	18%
	% Asian-Surnamed	18%	20%	8%	11%	16%	14%
	% Filipino-Surnamed	6%	2%	1%	1%	10%	4%
	% NH White est.	49%	62%	69%	72%	43%	59%
	% NH Black	3%	3%	6%	2%	6%	4%
Voter Turnout (Nov 2020)	Total	73,767	74,505	77,290	83,466	68,848	377,876
	% Latino est.	25%	12%	15%	13%	27%	18%
	% Spanish-Surnamed	23%	11%	14%	13%	25%	17%
	% Asian-Surnamed	18%	20%	9%	11%	15%	14%
	% Filipino-Surnamed	6%	2%	1%	1%	10%	4%
	% NH White est.	50%	63%	71%	73%	44%	61%
	% NH Black	3%	3%	5%	2%	5%	3%
Voter Turnout (Nov 2018)	Total	51,421	56,132	60,697	65,211	46,444	279,905
	% Latino est.	23%	10%	12%	11%	25%	16%
	% Spanish-Surnamed	21%	10%	11%	11%	23%	15%
	% Asian-Surnamed	15%	16%	7%	9%	12%	12%
	% Filipino-Surnamed	5%	2%	1%	1%	9%	3%
	% NH White est.	55%	68%	75%	77%	49%	66%
	% NH Black est.	2%	3%	4%	2%	6%	3%
ACS Pop. Est.	Total	150,889	149,430	156,497	159,756	150,820	767,391
Age	age0-19	21%	24%	27%	24%	18%	23%
	age20-60	57%	55%	52%	56%	57%	55%
	age60plus	22%	22%	21%	20%	24%	22%
Immigration	immigrants	38%	37%	27%	29%	44%	35%
	naturalized	68%	50%	45%	49%	69%	58%
Language spoken at home	english	49%	55%	61%	62%	44%	54%
	spanish	18%	15%	26%	20%	14%	18%
	asian-lang	25%	20%	7%	9%	38%	19%
	other lang	9%	10%	7%	9%	4%	8%
Language Fluency	Speaks Eng. "Less than Very Well"	19%	17%	14%	13%	24%	17%
Education (among those age 25+)	hs-grad	36%	26%	26%	28%	41%	32%
	bachelor	30%	32%	26%	28%	29%	29%
	graduatedegree	15%	28%	29%	29%	10%	22%
Child in Household	child-under18	31%	33%	36%	33%	29%	33%
Pct of Pop. Age 16+	employed	70%	69%	67%	70%	69%	69%
Household Income	income 0-25k	9%	8%	10%	9%	10%	9%
	income 25-50k	11%	10%	11%	10%	13%	11%
	income 50-75k	11%	9%	11%	9%	14%	11%
	income 75-200k	47%	39%	33%	37%	48%	41%
	income 200k-plus	21%	34%	35%	34%	16%	29%
Housing Stats	single family	63%	57%	77%	66%	68%	66%
	multi-family	37%	43%	23%	34%	32%	34%
	rented	43%	42%	35%	41%	38%	40%
	owned	57%	58%	65%	59%	62%	60%

Total population data from the 2020 Decennial Census.

Surname-based Voter Registration and Turnout data from the California Statewide Database.

Latino voter registration and turnout data are Spanish-surname counts adjusted using Census Population Department undercount estimates. NH White and NH Black registration and turnout counts estimated by NDC. Citizen Voting Age Pop., Age, Immigration, and other demographics from the 2015-2019 American Community Survey and Special Tabulation 5-year data.