

October 27, 2021

San Mateo County Supervisorial District

Lines Advisory Commission

Sent via email (districtlines@smcgov.org)

Re: Public Comment on the Supervisorial Redistricting Process

Dear Members of the San Mateo County Supervisorial District Lines Advisory Commission:

I write to provide demographic information and maps in support of the Unity Map Coalition's draft map proposal. Our team at Asian Americans Advancing Justice - Asian Law Caucus provided technical and mapping assistance to the Unity Map Coalition to help them create a map that complied with the FAIR MAPS Act criteria and the Voting Rights Act, and to uplift equity goals and reflect community input in the process.

Attached are heat maps of demographic and socioeconomic characteristics that were identified in previous public comments and in the Unity Map Coalition's public comments. We hope that these maps help you better understand the communities of interest in San Mateo County.

Please do not hesitate to contact me at sietseg@advancingjustice-alc.org if you have any questions.

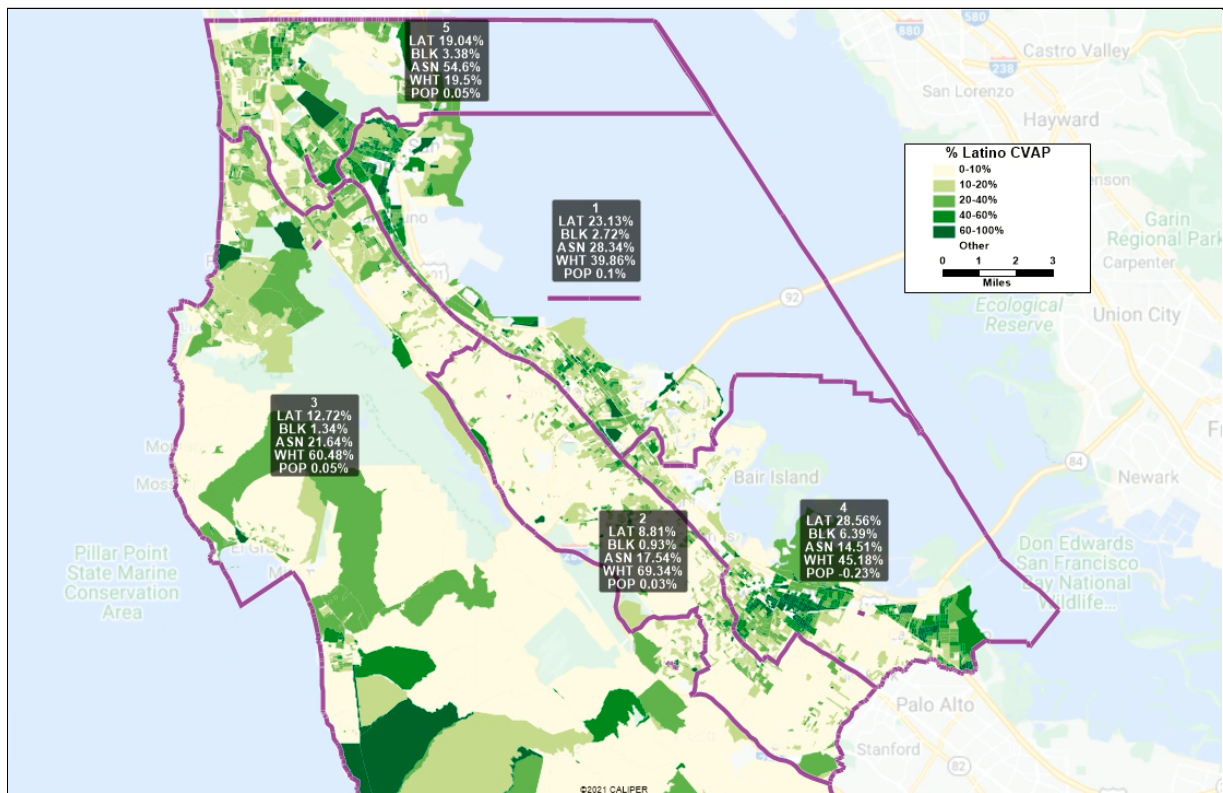
Sincerely,

Sietse Goffard

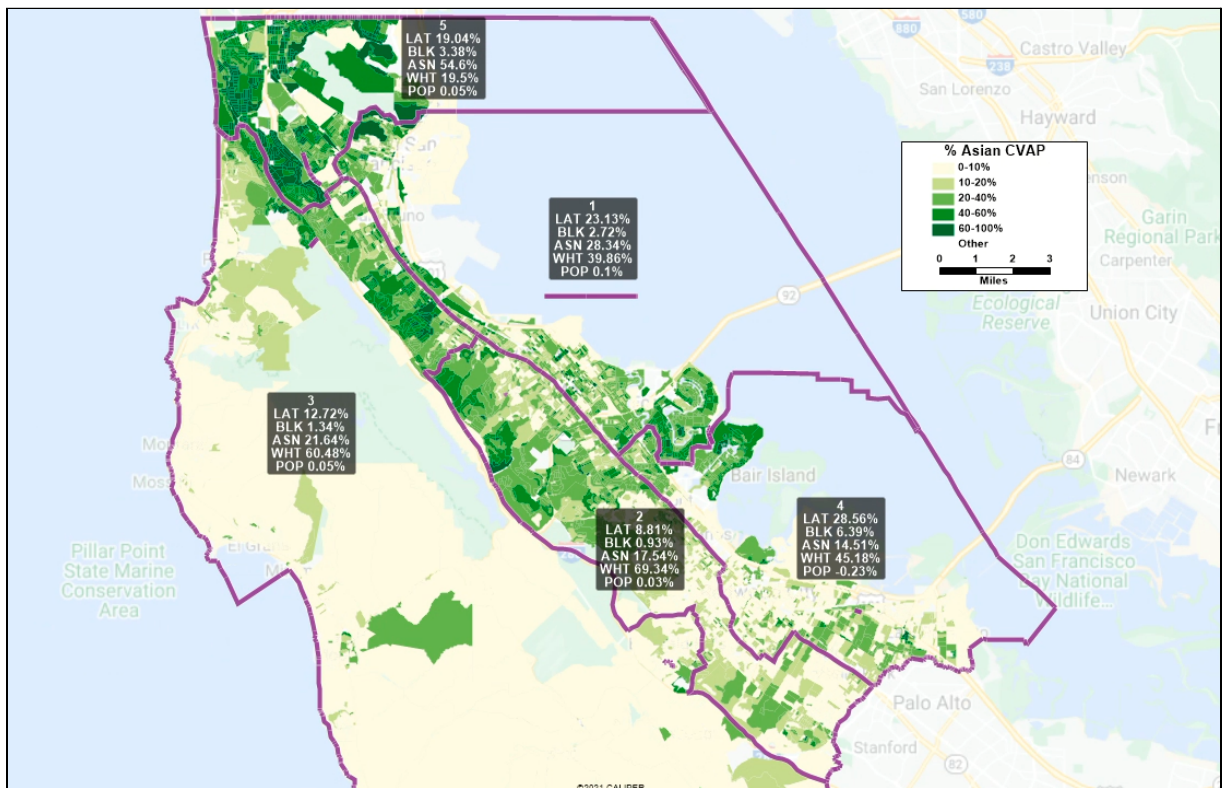
Senior Voting Rights Coordinator

Asian Americans Advancing Justice - Asian Law Caucus

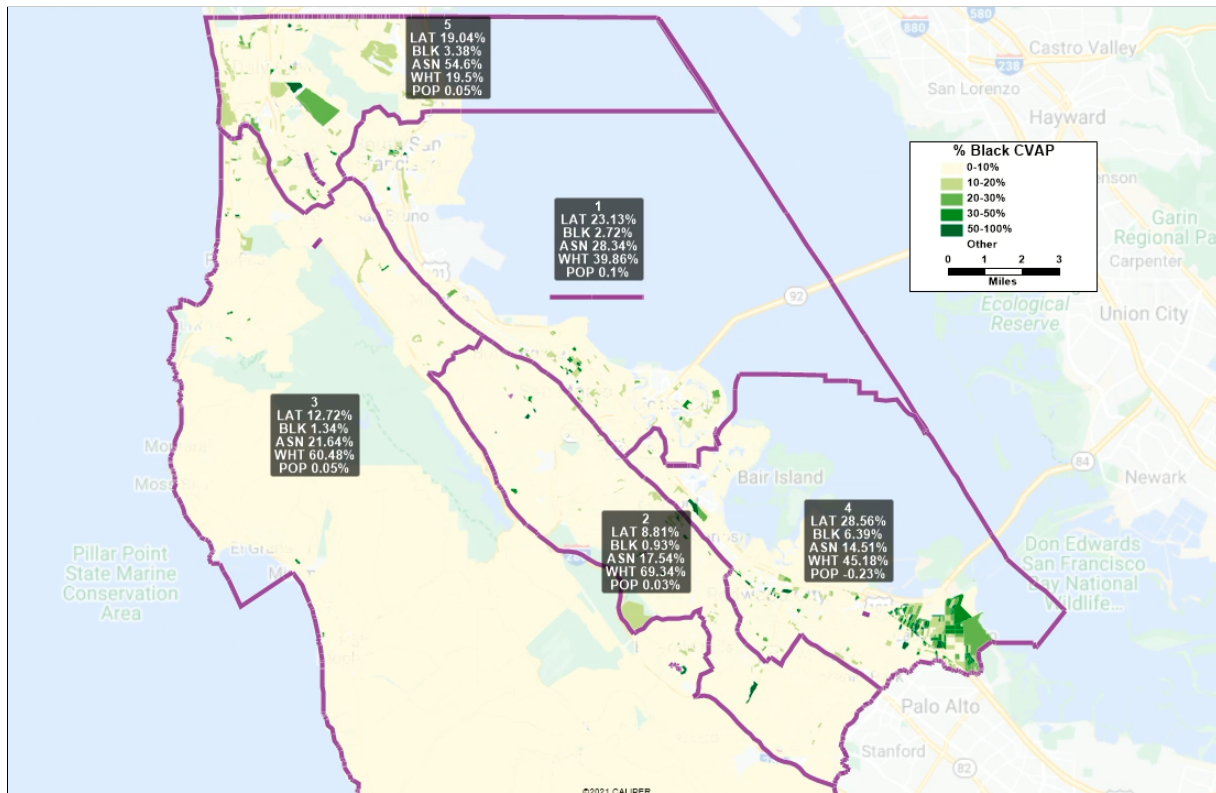
Citizen Voting-Age Population, % Latino (Source: US Census Bureau, 2020 Census)



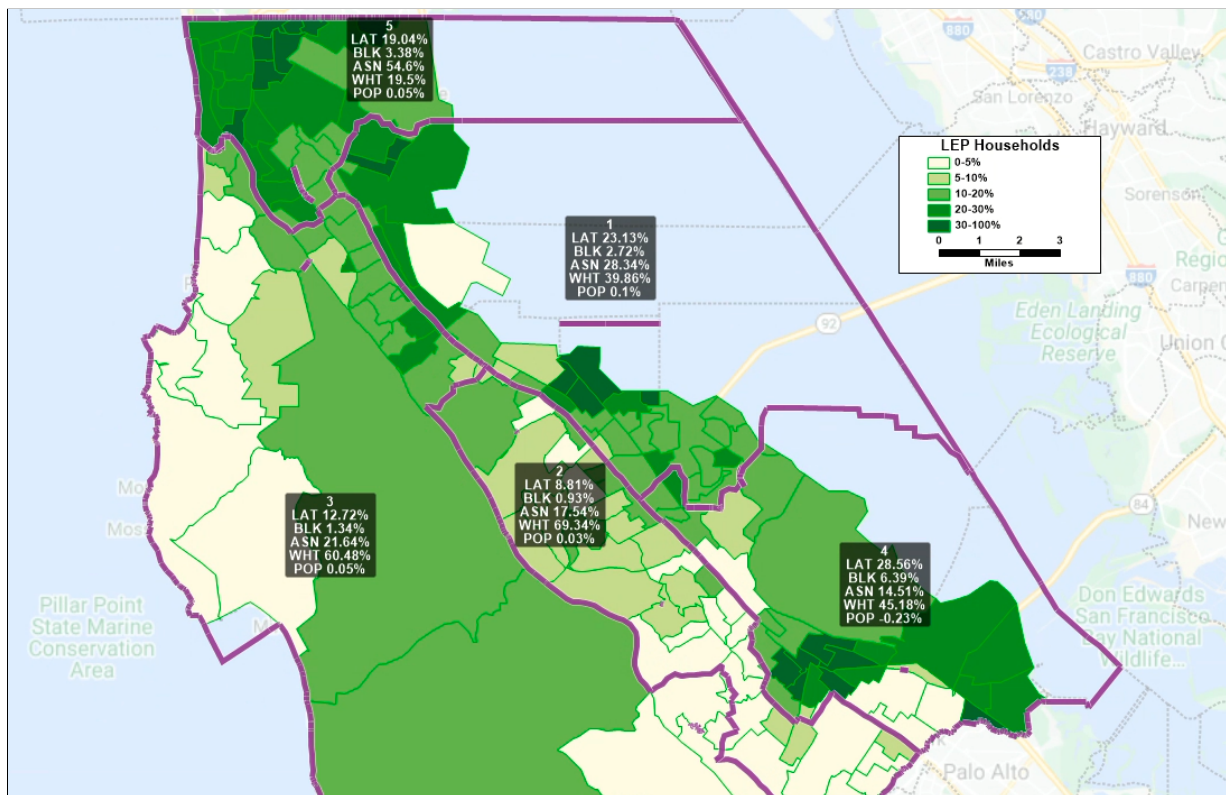
Citizen Voting-Age Population, % Asian (Source: US Census Bureau, 2020 Census)



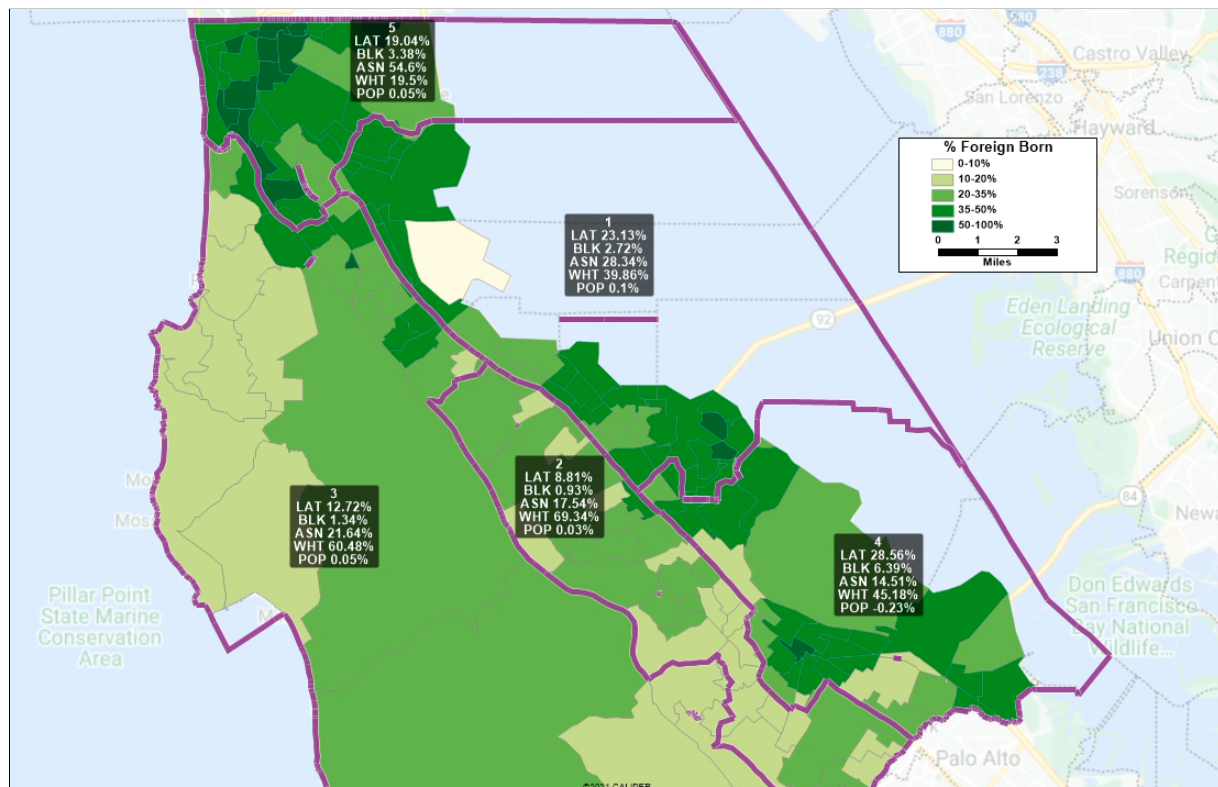
Citizen Voting-Age Population, % Black (Source: US Census Bureau, 2020 Census)



% of Limited English Proficient Households (Source: American Community Survey, 2019)



% of Foreign-Born Residents (Source: American Community Survey, 2019)



% of Households under Federal Poverty Line (Source: American Community Survey, 2019)

