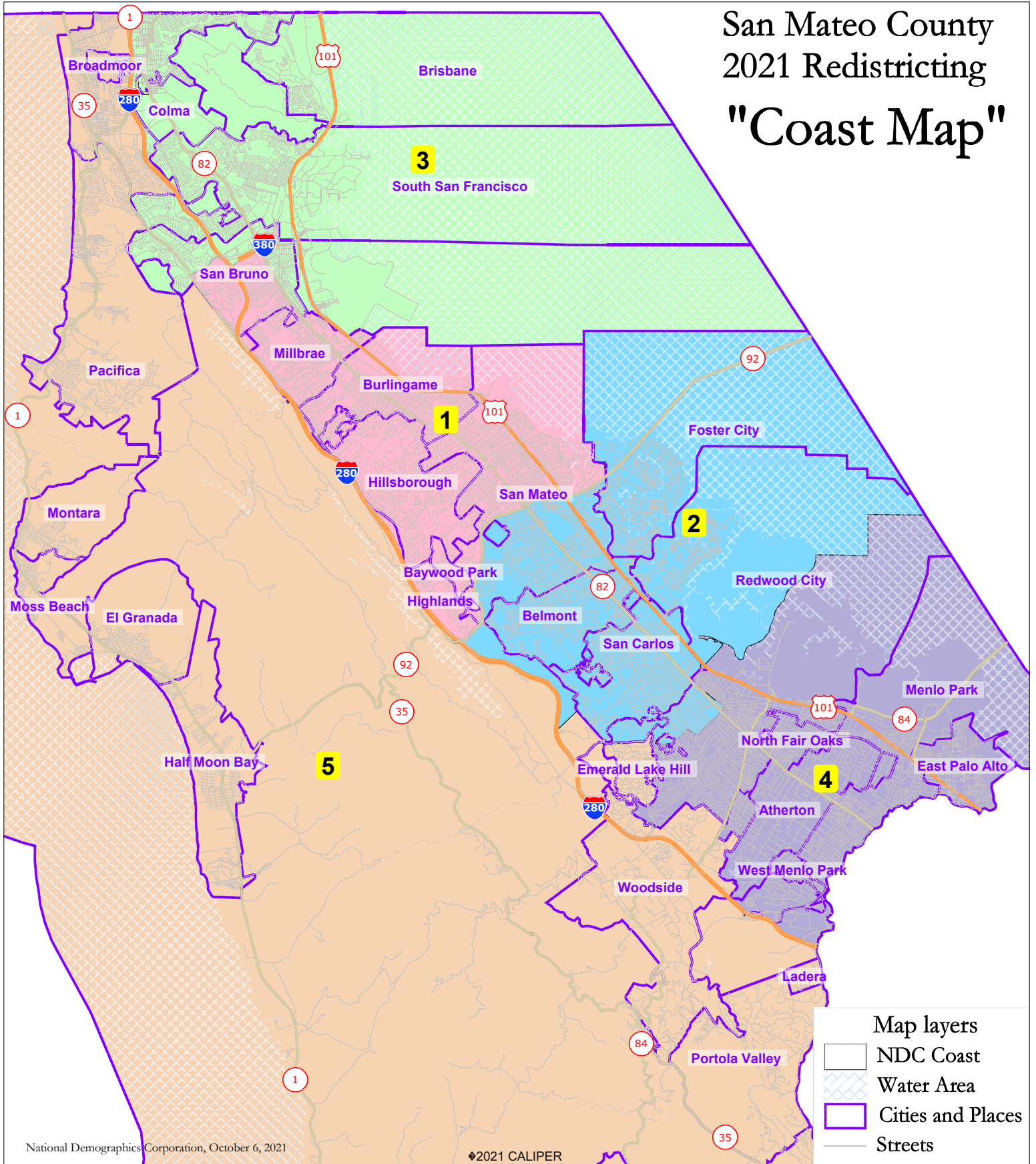


San Mateo County 2021 Redistricting "Coast Map"



San Mateo County NDC Coast Map							
District		1	2	3	4	5	Total
	Total Pop	150,909	158,047	150,767	158,887	146,807	765,417
	Deviation from ideal	-2,174	4,964	-2,316	5,804	-6,276	12,080
	% Deviation	-1.42%	3.24%	-1.51%	3.79%	-4.10%	7.89%
Total Pop	% Hisp	19.3%	14%	32%	41%	19%	25%
	% NH White	41%	45%	17%	37%	40%	36%
	% NH Black	2%	2%	2%	4%	2%	2%
	% Asian-American	34%	36%	44%	13%	35%	32%
Citizen Voting Age Pop	Total	97,176	99,244	103,676	91,706	109,048	500,848
	% Hisp	13%	11%	27%	26%	13%	18%
	% NH White	53%	58%	22%	54%	50%	47%
	% NH Black	2%	2%	3%	6%	3%	3%
	% Asian/Pac.Isl.	30%	27%	47%	13%	33%	31%
Voter Registration (Nov 2020)	Total	91,928	95,167	81,771	83,098	93,922	445,886
	% Latino est.	13%	10%	35%	24%	18%	19%
	% Spanish-Surnamed	12%	9%	32%	22%	16%	18%
	% Asian-Surnamed	19%	18%	16%	8%	11%	14%
	% Filipino-Surnamed	2%	2%	9%	1%	6%	4%
	% NH White est.	64%	68%	37%	62%	63%	59%
	% NH Black	2%	2%	5%	7%	4%	4%
Voter Turnout (Nov 2020)	Total	79,264	84,015	66,140	68,915	79,542	377,876
	% Latino est.	12%	9%	34%	21%	17%	18%
	% Spanish-Surnamed	12%	9%	31%	20%	15%	17%
	% Asian-Surnamed	19%	18%	16%	8%	11%	14%
	% Filipino-Surnamed	2%	2%	9%	1%	6%	4%
	% NH White est.	65%	69%	38%	64%	64%	61%
	% NH Black	2%	2%	4%	6%	3%	3%
Voter Turnout (Nov 2018)	Total	60,065	65,403	43,170	51,985	59,282	279,905
	% Latino est.	11%	8%	32%	18%	14%	16%
	% Spanish-Surnamed	10%	8%	30%	16%	13%	15%
	% Asian-Surnamed	15%	15%	14%	7%	8%	12%
	% Filipino-Surnamed	2%	1%	8%	1%	5%	3%
	% NH White est.	70%	73%	42%	69%	70%	66%
	% NH Black est.	2%	2%	4%	5%	3%	3%
ACS Pop. Est.	Total	149,148	155,115	151,157	161,284	150,687	767,391
Age	age0-19	24%	23%	20%	27%	20%	23%
	age20-60	54%	55%	57%	56%	54%	55%
	age60plus	23%	22%	23%	17%	26%	22%
Immigration	immigrants	33%	33%	45%	32%	31%	35%
	naturalized	57%	53%	68%	39%	68%	58%
Language spoken at home	english	59%	62%	40%	52%	60%	54%
	spanish	14%	8%	23%	35%	11%	18%
	asian-lang	19%	18%	31%	6%	24%	19%
	other lang	9%	13%	6%	7%	5%	8%
Language Fluency	Speaks Eng. "Less than Very Well"	16%	12%	25%	18%	15%	17%
Education (among those age 25+)	hs-grad	28%	23%	40%	31%	36%	32%
	bachelor	31%	34%	27%	23%	30%	29%
	graduatedegree	25%	32%	9%	25%	18%	22%
Child in Household	child-under18	32%	33%	31%	37%	29%	33%
Pct of Pop. Age 16+	employed	69%	70%	70%	69%	67%	69%
Household Income	income 0-25k	8%	8%	10%	11%	8%	9%
	income 25-50k	10%	8%	13%	14%	11%	11%
	income 50-75k	10%	8%	12%	12%	12%	11%
	income 75-200k	40%	39%	49%	34%	43%	41%
	income 200k-plus	31%	38%	16%	28%	26%	29%
Housing Stats	single family	60%	63%	65%	64%	78%	66%
	multi-family	40%	37%	35%	36%	22%	34%
	rented	40%	39%	41%	49%	31%	40%
	owned	60%	61%	59%	51%	69%	60%
Total population data from the 2020 Decennial Census.							
Surname-based Voter Registration and Turnout data from the California Statewide Database.							
Latino voter registration and turnout data are Spanish-surname counts adjusted using Census Population Department undercount estimates. NH White and NH Black registration and turnout counts estimated by NDC. Citizen Voting Age Pop., Age, Immigration, and other demographics from the 2015-2019 American Community Survey and Special Tabulation 5-year data.							